

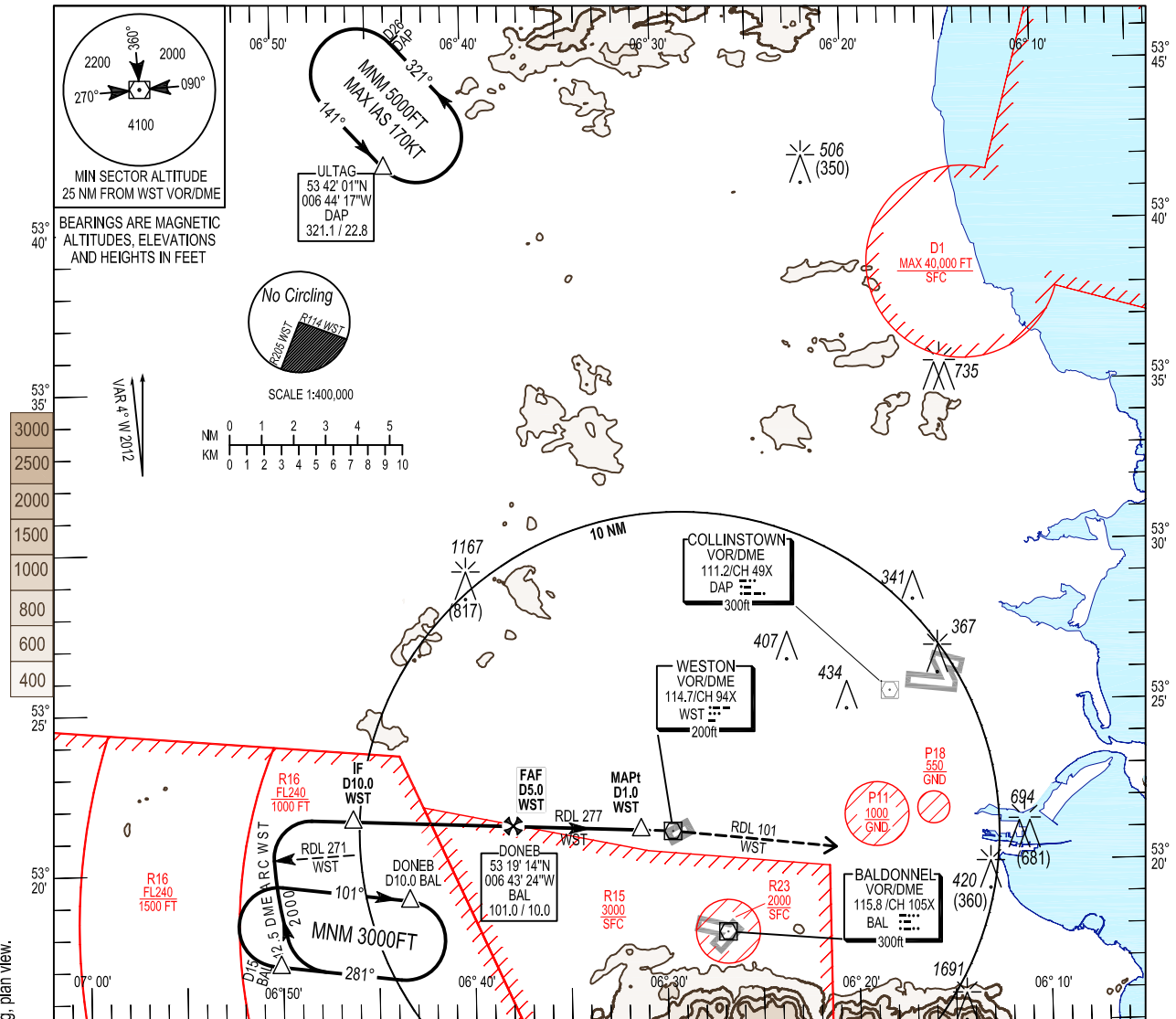
**INSTRUMENT APPROACH CHART - ICAO**

**AERODROME ELEV 155 ft**  
 HEIGHTS RELATED TO AD - ELEV 155 ft

DUBLIN APP	121.100
WESTON TWR	122.400
WESTON GND	119.425
WESTON ATIS	118.875

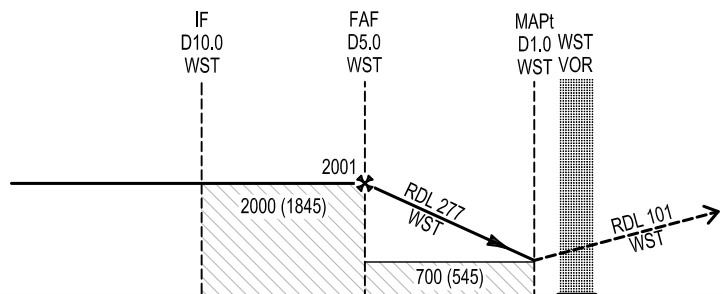
CONSULT NOTAM FOR LATEST INFORMATION

**WESTON / WESTON**  
 VOR - C (EIR15 & R16 active)  
 (ACFT CAT A, B.)



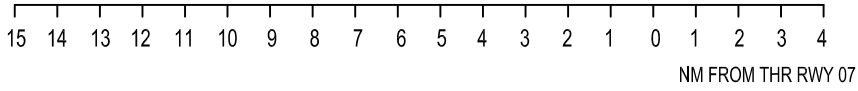
Change: Addition of radial text on inbound leg, plan view.

**TRANSITION ALTITUDE 5000 ft**



**MISSED APPROACH:**  
 Climb on RDL 101 WST VOR/DME to 2000ft QNH, or as previously briefed, and contact Dublin App on 121.100  
 (In the event of a COMMS failure, carry out the missed approach, climbing to 5000ft QNH and at D10 WST turn left to DAP to join DAP RDL 321 to ULTAG.  
 From ULTAG complete the IAP to EIDW RWY16 to land or circle to land on the active RWY.)

ELEV 152 ft (THR RWY 25)  
 ELEV 155 ft (THR RWY 07)



OCA (H)	A	B	Recommended Profile on Final Approach					
VISUAL MANOEUVRING	700 (545)	800 (645)	DME	5.0	4.0	3.0	2.0	
<b>DME required</b> Expect visual landing instructions from ATC Weston. No Circling SE of the RWY between RDL 114 and 205 WST. See visual circling procedures for Runway 07/25.			ALT (HT)	2001 (1846)	1672 (1517)	1346 (1191)	1022 (867)	
			Descent Rate 5.2%, (3°), 318 ft/NM	kts	80	100	120	140
			ft / min	425	530	635	745	850